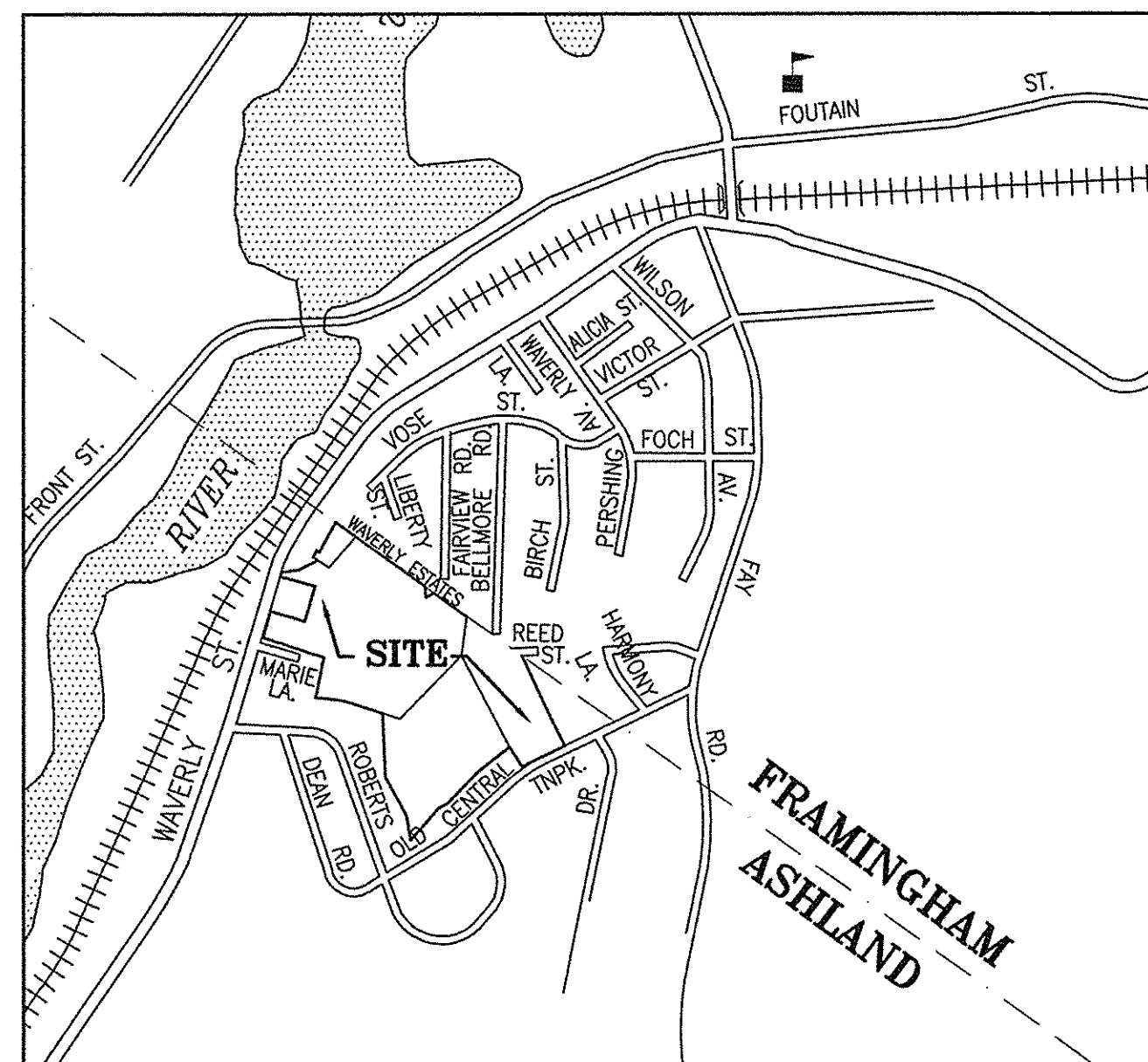
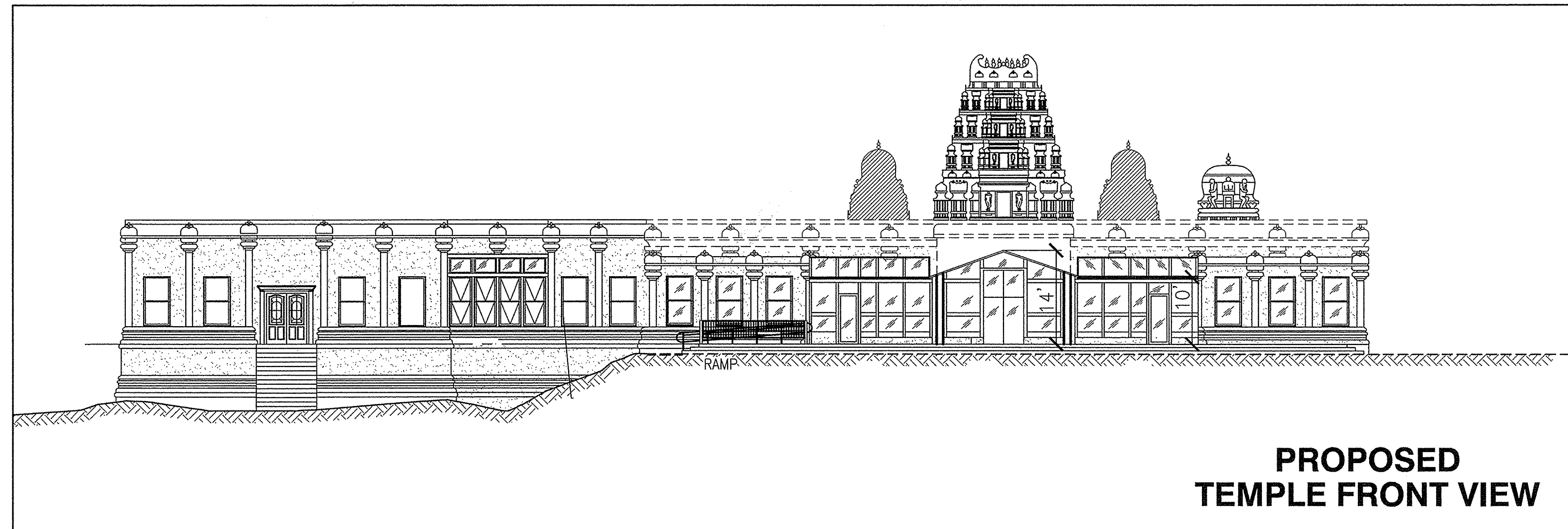


PROPOSED SEWER CONNECTION TO
NEW ENGLAND HINDU TEMPLE, INC.
 117 WAVERLY STREET, ASHLAND, MASS. 01721



LOCUS MAP
 NOT TO SCALE



PROPOSED
 TEMPLE FRONT VIEW

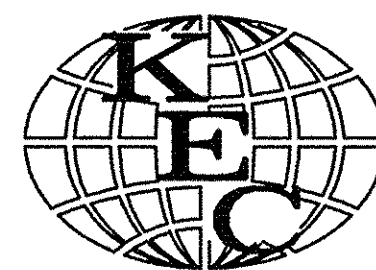
WAVERLY STREET CONNECTION BY GRAVITY SEWER

SCHEDULE OF DRAWINGS

DWG. NO.	DESCRIPTION
-	COVER SHEET
1	GENERAL NOTES & KEY PLAN
2	SEWER PLAN
3	PROFILES
4	DETAILS 1
5	DETAILS 2
6	TEMPORARY BY-PASS PATH

SEWER EASEMENT DRAWING

OWNER:
NEW ENGLAND HINDU TEMPLE, INC.
 117 WAVERLY STREET
 ASHLAND, MA 01721
 TEL: 508-881-5775



KALKUNTE ENGINEERING CORPORATION
 CONSULTING ENGINEERS
 1749 CENTRAL STREET
 STOUGHTON, MA 02072
 (781) 344-8565

REVISION: 10/24/2013

REVISION: 09/24/2012

DATE: NOVEMBER 17, 2011

GENERAL CONSTRUCTION / DESIGN NOTES:

- NEW ENGLAND HINDU TEMPLE, INC (NEHTI) IS A NOT FOR PROFIT CORPORATION, A RELIGIOUS INSTITUTION. AND TAX EXEMPTED BY THE COMMONWEALTH OF MASSACHUSETTS. ANY AND ALL ITEMS PURCHASED EXCLUSIVELY FOR THE TEMPLE PROJECT IS EXEMPTED FROM THE STATE SALES TAX, AND THE TAX EXEMPT NUMBER WILL BE GIVEN TO THE CONTRACTOR. EVIDENCE OF PURCHASED ITEMS SHALL BE GIVEN TO NEHTI.
- Location of all utilities and subsurface structures are from survey and records of the City/Town, utility companies and are considered approximate as to size and location, and may be incomplete. The contractor shall call 1-888-DIG-SAFE and obtain their clearance when they can start digging. For each area of excavation obtain separate Dig-Safe number by clearly informing the EACH area of excavation to all parties recognized in the Dig-Safe permit, and also obtain permission from the municipal authorities for all underground utilities not covered by the Dig-Safe. Kalkunte Engineering Corporation does not warrant the location of underground utilities and take no responsibility if any line(s) is (are) not shown.
- Contractor must verify the Bench Marks given, and all existing and proposed grades by retaking a new set elevations throughout the proposed sewer route in order to establish proper controls during project execution. Elevations from the low point of the sewer to the highest point of the sewer, proposed manhole depths should be confirmed prior to ordering any and all structures. Two bench marks are given, one at the existing MH RIM on Waverly Street, and the other Temple first floor elevation.
- Any elevation discrepancies found in the field and drawings should be brought to the Engineer's attention for prompt correction. There shall be no additional compensation to the contractor due to any changes that may result due to changes in the field condition.
- All disturbed areas shall be restored to original condition, that is, prior start of construction, or better.
- The Contractor shall confine all his operation and activities for construction purposes within the street lines, easements, and right-of-way. Such lines and property lines are taken from subdivision plans, street layouts, and assessor's maps.
- Test Borings were made for the project. Rock excavation is needed. Contractor is encouraged to conduct preliminary test as needed to determine presence or absence of rock.
- If ledge blasting is needed to install sewer or any structures, the Contractor shall employ personal with blasting credentials to do the blasting work, obtain blasting permit from the local Fire Department, either from the Town of Ashland and/or from the Town of Framingham, as needed, conduct pre-blasting survey, and shall provide the New England Hindu Temple, Inc. all needed insurances, and shall indemnify the Temple for all his work. The Temple will not permit blasting work until the insurance papers are submitted and be satisfactory to the Temple. When ledge is blasted, it shall be removed and disposed by the contractor.
- Utilities:
In the City/Town where the work is proposed, the contractor shall be licensed by the appropriate officials such as Public Works Department, Engineering Department, or the Board of Selectmen. Obtain all permit needed for the construction of the project, including Road Opening Permit where needed, make arrangements for timely inspections, obtain sign-offs where needed. Submit these documents to the Engineer. Do not operate any of public works utilities without their permission, such as opening hydrants for water, etc. All pipe materials, fittings, hydrants, catch basins, etc. shall meet the current local specifications and requirements. Water and sewer/drain shall have 10 feet horizontal separation, or sewer/drain should be below water main 18 inch, clear separation vertically between the pipes. All utility trenches shall be repaired in accordance with the road opening permit in public streets. All sewer pipes/manholes shall tested for leak, cleaned, and flushed prior o put use. Leak test shall be by water or by low pressure air.

While constructing one utility line, provide full protection for all other utility lines, and the contractor shall be responsible for any damage, repair, and other liabilities.
- All trenches shall be backfilled in layers of 12 inches, well compacted, and allowed to settle prior to applying asphalt base course.
- The contractor/bidder shall examine the site thoroughly, as part of site clearing, if trees to be cut, then, obtain permission from the tree warden(or similar person with the authority) before cutting, at no additional cost to the owner.
- Driveway Pavement: 12" compacted gravel, 2 inch binder course, and 1 1/2 inch wearing course, and any restoration of the existing roadways, and sidewalk shall match the existing conditions.
- Contractor shall assume risk of dewatering.
- Safety. Take adequate safety in construction at all times, follow OSHA regulations, take proper traffic safety, obtain police details where needed, and designate a person as a safety inspector.
- All wall penetrations of sewer manholes, Grease Trap tank, Pump chamber, shall be cored and booted.
- SHOP DRAWINGS: Shop drawings (four copies) shall be submitted for all the items including manholes, manhole frame & cover, grease trap tank, pump chamber, pipes, pump & pump curves, warranty one one year, pump electrical control panel for alternating pumping cycle, and for items requested by the Engineer. For tanks, need weight also.
- TREES: Along the proposed sewer route number trees will have to be cut, and the contractor is responsible to cut the trees, remove and dispose the stumps.
- All construction work shall comply with the Towns of Framingham and Ashland DPW Construction Standards and or requirements.
- For complete information on the site, see site plan to be prepared by others for NEHTI.
- Grease-trap Tank Maintenance: NEHTI should institute a maintenance program for the Grease-trap Tank all per the Framingham sewer standards and sewer Ordinance. The tank should never become more than 25% full. Pump-out grease minimum of four times a year to insure no escape of grease to sewer.

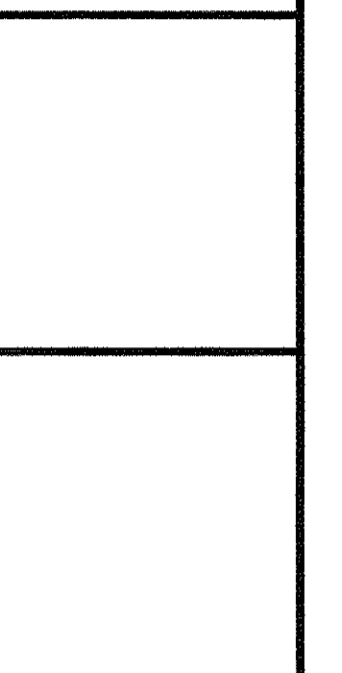


KEY PLAN
SCALE 1" = 100'

SCOPE OF WORK

- NEHTI is on septic system, and the project is that all wastewaters generated on the Temple grounds must be connected to the Framingham sewer system.
- The Temple grounds consists of three (3) buildings, the main Temple building, Priest's Quarters, and #137 Waverly Street. All three buildings must be connected to the Framingham sewer system. And each building has its own separate septic sewage disposal system. Contractor to obtain directly from the NEHTI as-built drawings for the systems.
- WHEN THE CONSTRUCTION OF SEWER IS COMPLETED AND ACCEPTED BY THE TOWNS OF ASHLAND AND FRAMINGHAM, CONNECT THE FOLLOWING TO NEW SEWER CONSTRUCTED: MAIN TEMPLE BUILDING, PRIEST'S QUARTERS, AND THE BUILDING #137 WAVERLY STREET. THEN, OBTAIN PERMISSION FROM THE ASHLAND BOARD OF HEALTH TO DECOMMISSION THE SEPTIC SYSTEM IN ACCORDANCE WITH THE TITLE 5 REQUIREMENTS.

KALKUNTE ENGINEERING CORPORATION
CONSULTING ENGINEERS
1749 CENTRAL STREET
STOUGHTON, MA 02072
(781) 344-8565



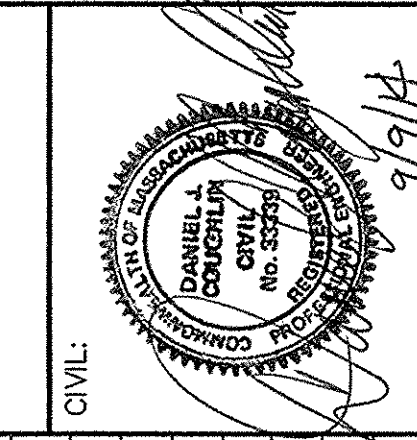
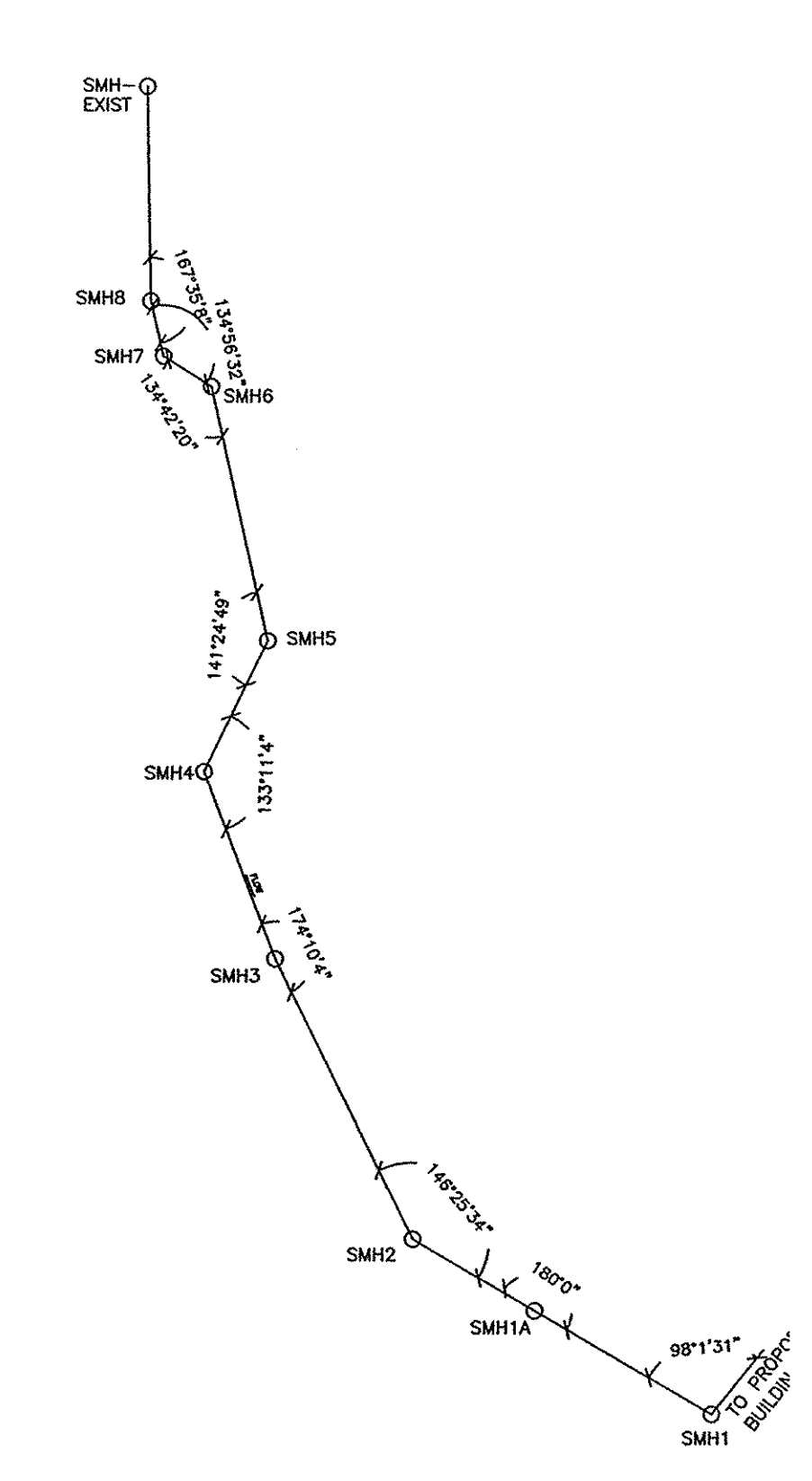
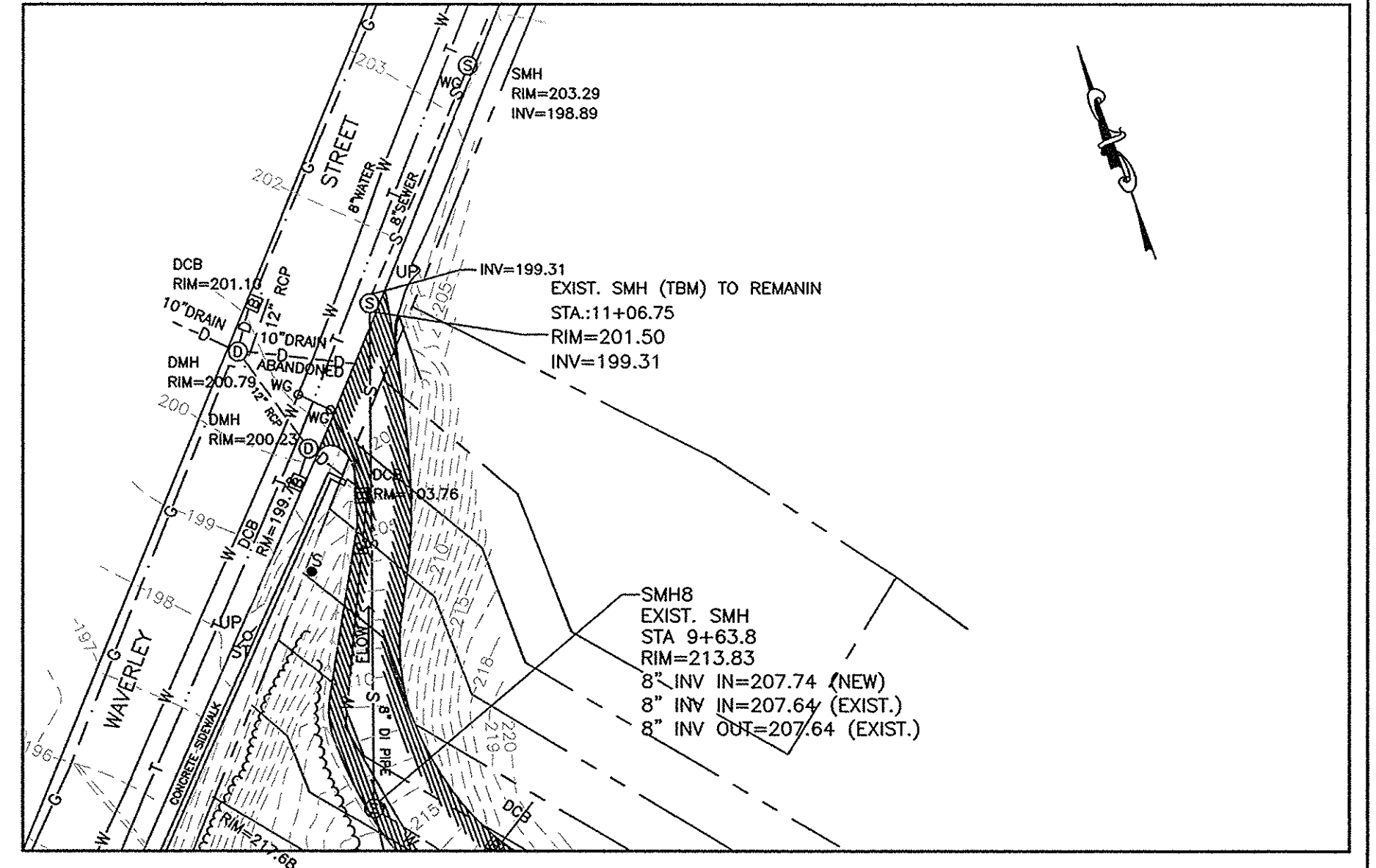
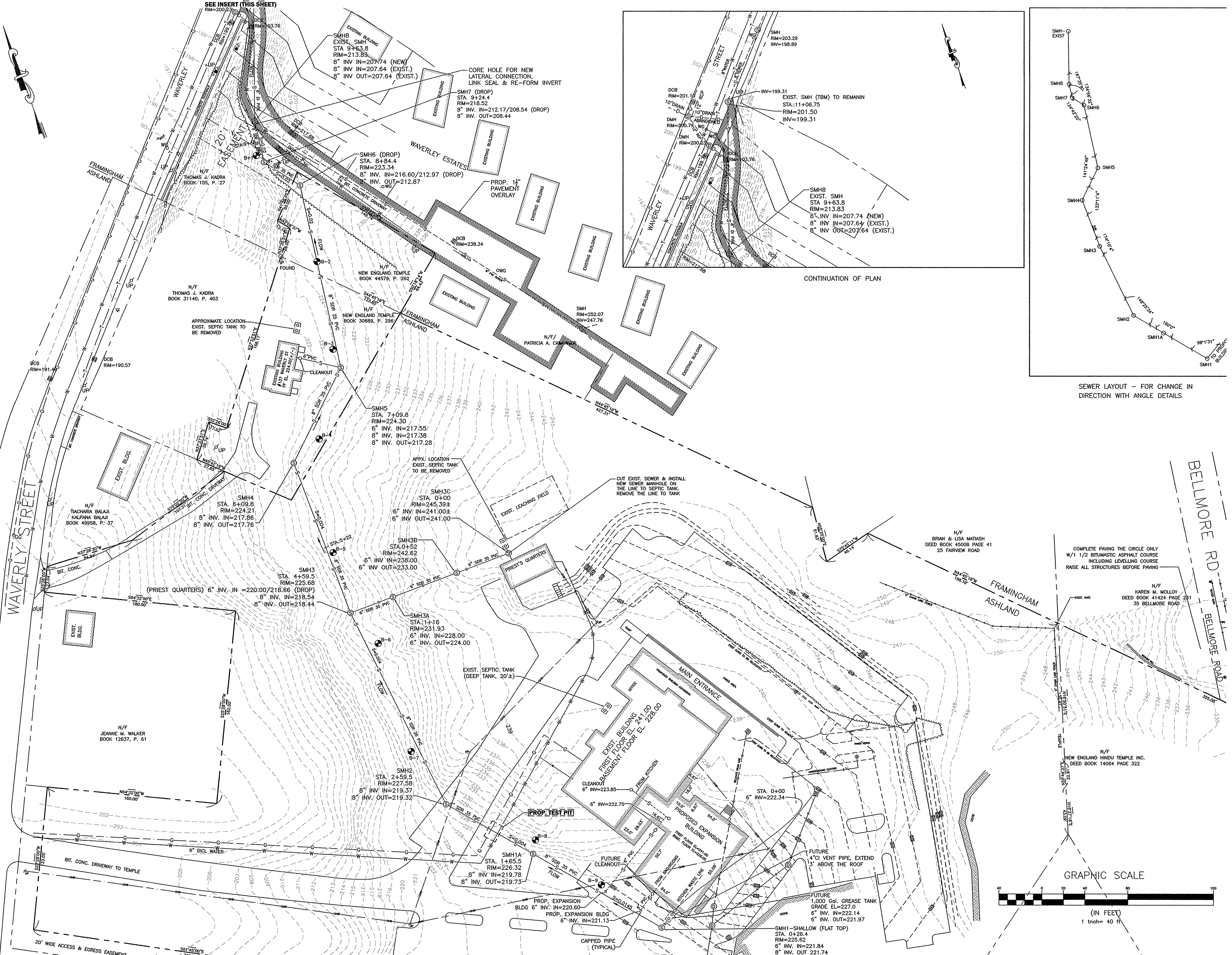
Scale's NOTED	Revisions
Date: 09/23/2011	
Job No.	
Designed by: KNS	
Drawn by: DZP	09/24/2012
Checked by: KNS	1
S.	Approved by

NEW ENGLAND HINDU TEMPLE, INC.
117 WAVERLY ST., ASHLAND, MA 01721

GENERAL NOTES & KEY PLAN

Dwg No.

1



DRW	EA	DSG	DUC	CHK	DUC	DATE
AS	DEPICT PAVEMENT OVERLAY AREA	9/5/20H				9/9/20H
AS	LIMITS OF WORK					

PROPOSED SITE SEWER PLAN (REVISED)

NEW ENGLAND HINDU TEMPLE, INC.
PROPOSED SEWER UPGRADES
ASHLAND, MASSACHUSETTS

Prepared For

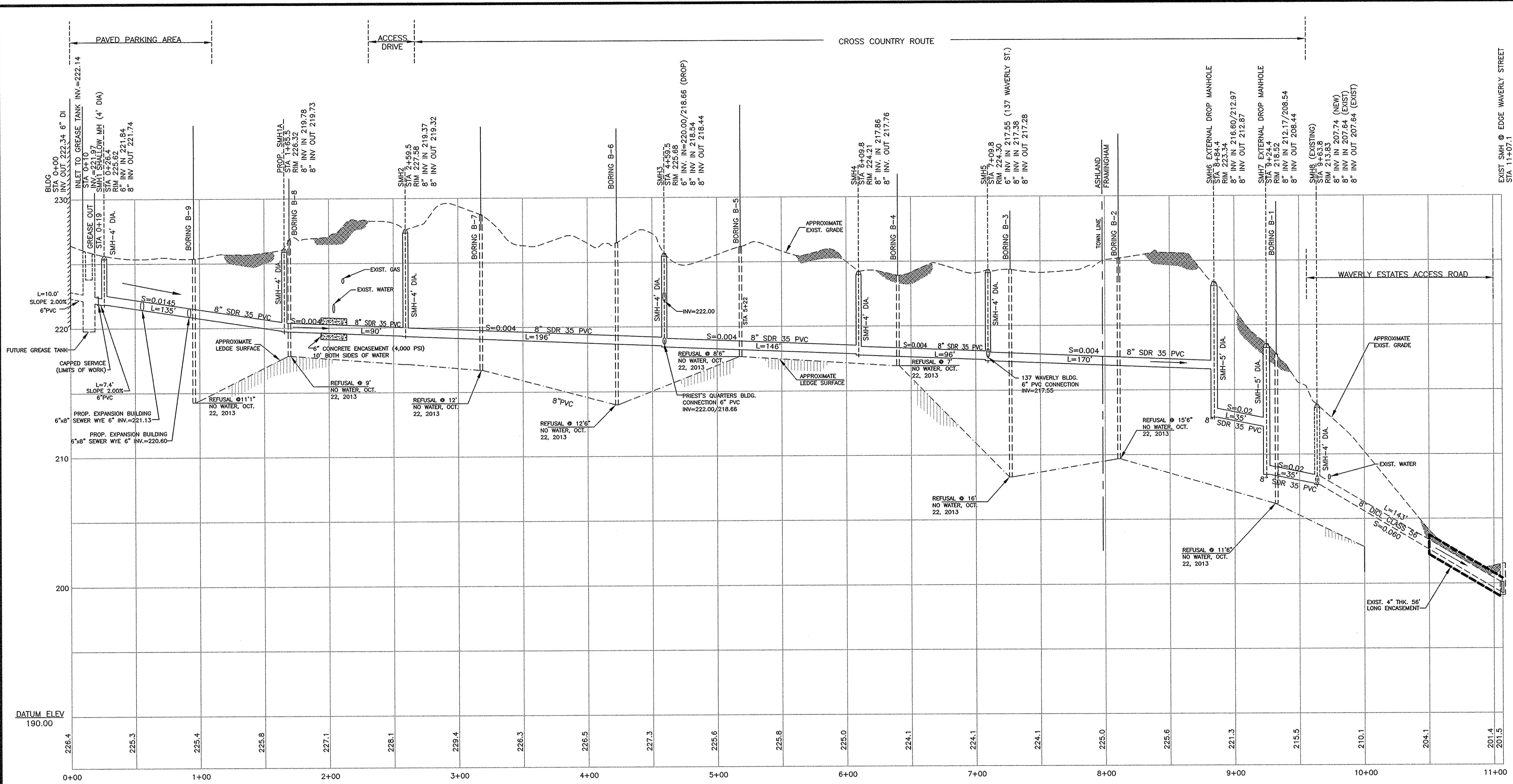
NEW ENGLAND HINDU TEMPLE, INC.
WAVERLY STREET, ASHLAND, MA

C OUGHLIN ENVIRONMENTAL SERVICES, LLC

CONSULTING ENGINEERS AND PLANNERS

62 Montvale Avenue Phone: (781) 832-1002
 Stoneham, MA 02180-3637 Fax: (781) 438-9654
 Email: mail@coughlinenvironmental.com

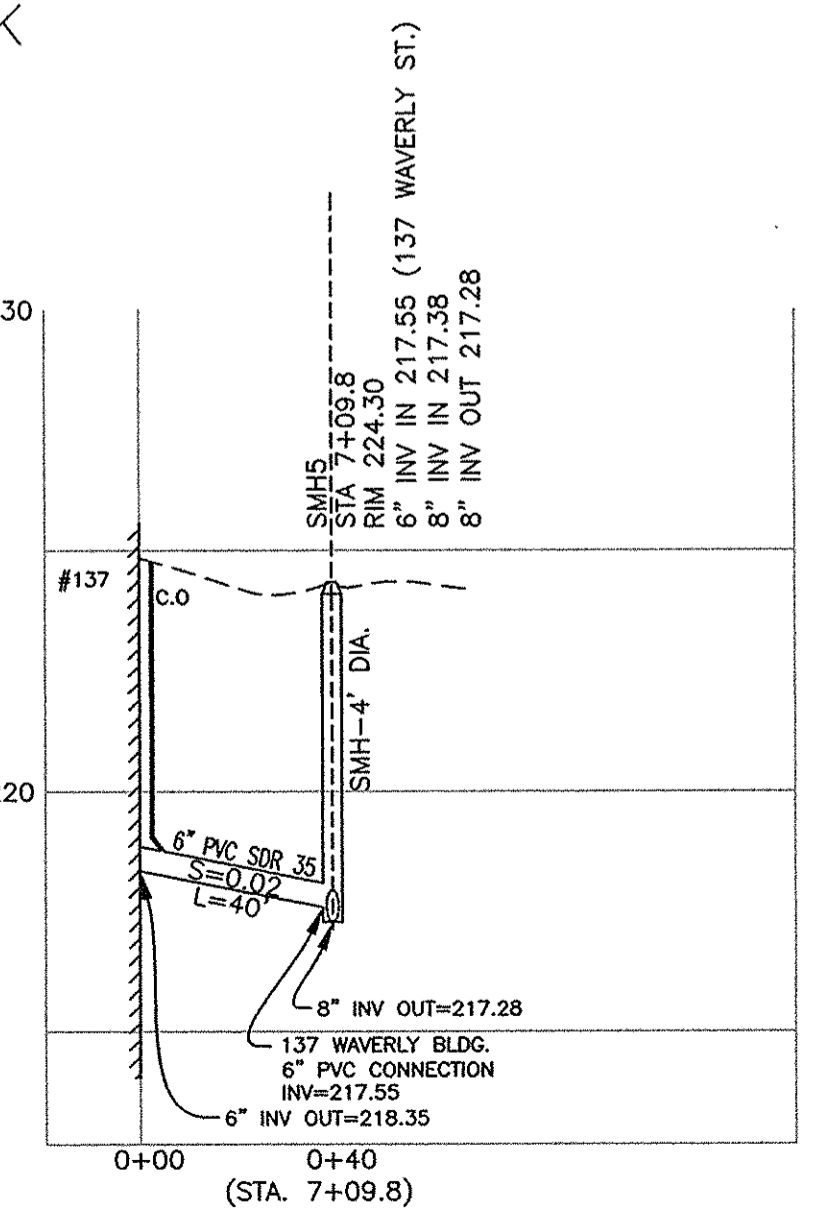
DATE: AUGUST 2014
 Q:\Projects\2690-01 Hindu Temple\CAD\SITE PLAN.dwg
 CES NO.: 2690-01 SCALE: 1"=40'
SHEET 2 OF 5



SEWER MAIN PROFILE & CONNECTION TO WAVERLY ST. MANHOLE ON SIDEWALK
AT WAVERLY ESTATES

HORIZONTAL SCALE 1"=40'
VERTICAL SCALE 1"=4'

- NOTES:
- KNOWN UTILITY CROSSINGS ARE SHOWN. DETERMINE ITS EXACT LOCATIONS IN THE FIELD, AND ITS DEPTH TO ENSURE SEWER GRADE CAN BE MAINTAINED PROPERLY.
 - NOT ALL OVERHEAD WIRES (OHW) SHOWN, CONTRACTOR CAUTIONED AS TO THE HEIGHT NEEDED TO OPERATE HEAVY EQUIPMENT.
 - WATER LINE AROUND STATION 2+05 ALONG THE SEWER ROUTE IS VERY CLOSE. SUPPORT THE PIPE ADEQUATELY DURING CONSTRUCTION, AND WHEN THE TRENCH IS PARTIALLY BACKFILLED AND COMPACTED, ENCASE THE SEWER LINE WITH 6 INCH CONCRETE AROUND FOR A DISTANCE OF 10 FEET ON EITHER SIDE OF WATER MAIN.
 - EXISTING MANHOLE CHANNEL TO BE MODIFIED AND THE MANHOLE SHALL BE CORED AND NEW PIPE SEALED WITH LINK-SEAL PRIOR TO REFORMING CHANNEL.
 - SEE TEST BORING LOGS FOR ADDITIONAL INFORMATION. INFORMATION ON THE SUBSOIL CONDITION SHOWN THROUGH TEST BORINGS IS LIMITED TO SITE WHERE THE BORING WAS DONE, AND THIS IS TO PROVIDE A GENERAL IDEA AND EXTENT OF REFUSALS ENCOUNTERED ALONG THE SEWER ROUTE.
 - 6" DUCTILE IRON BUILDING SEWER SHALL BE DOUBLE EPOXY COATED INSIDE



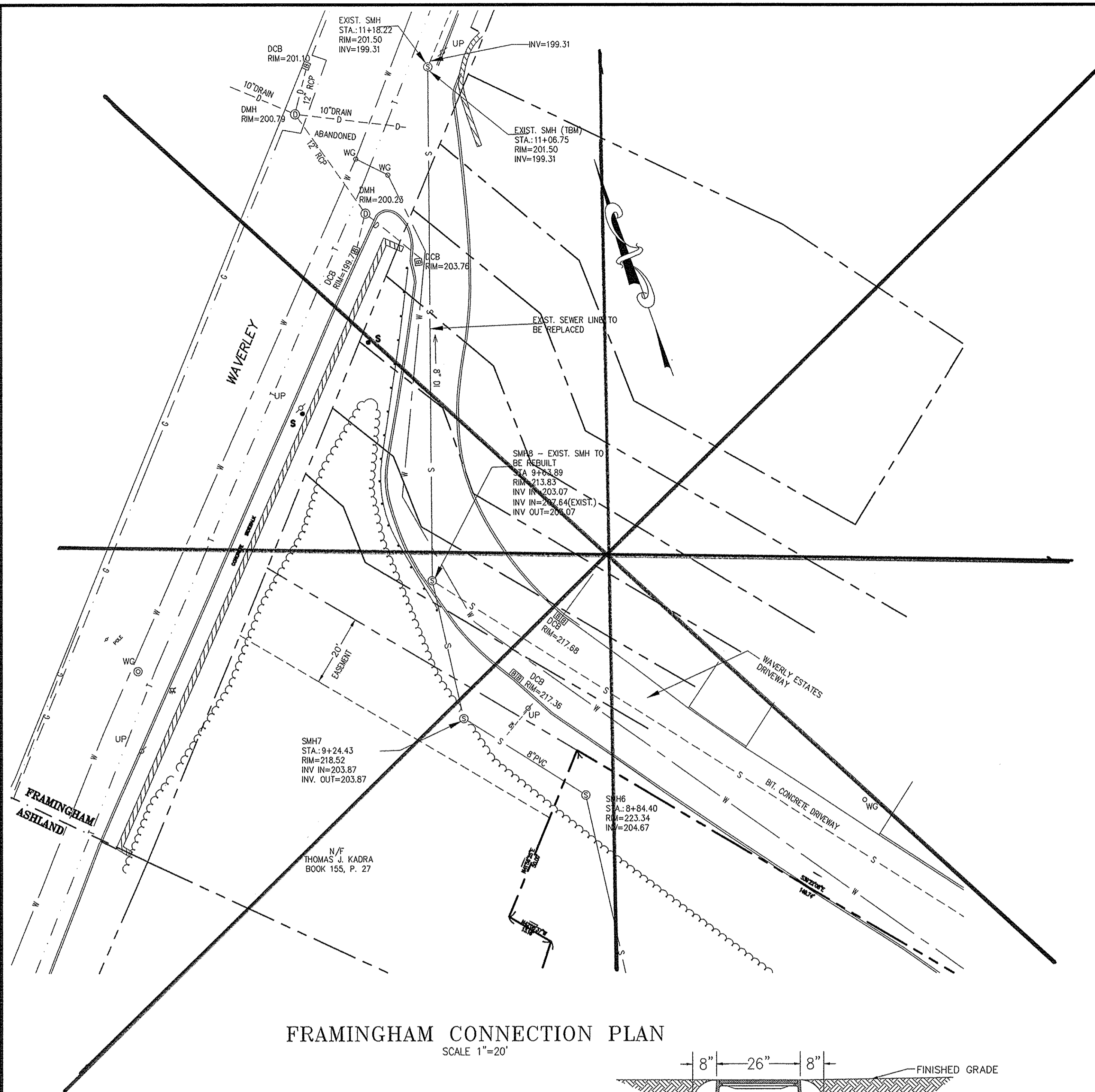
REDIRECT BASEMENT PLUMBING TO EXISTING REAR OF BUILDING TOWARDS NEW SEWER

#137 WAVERLY ST. SERVICE PROFILE

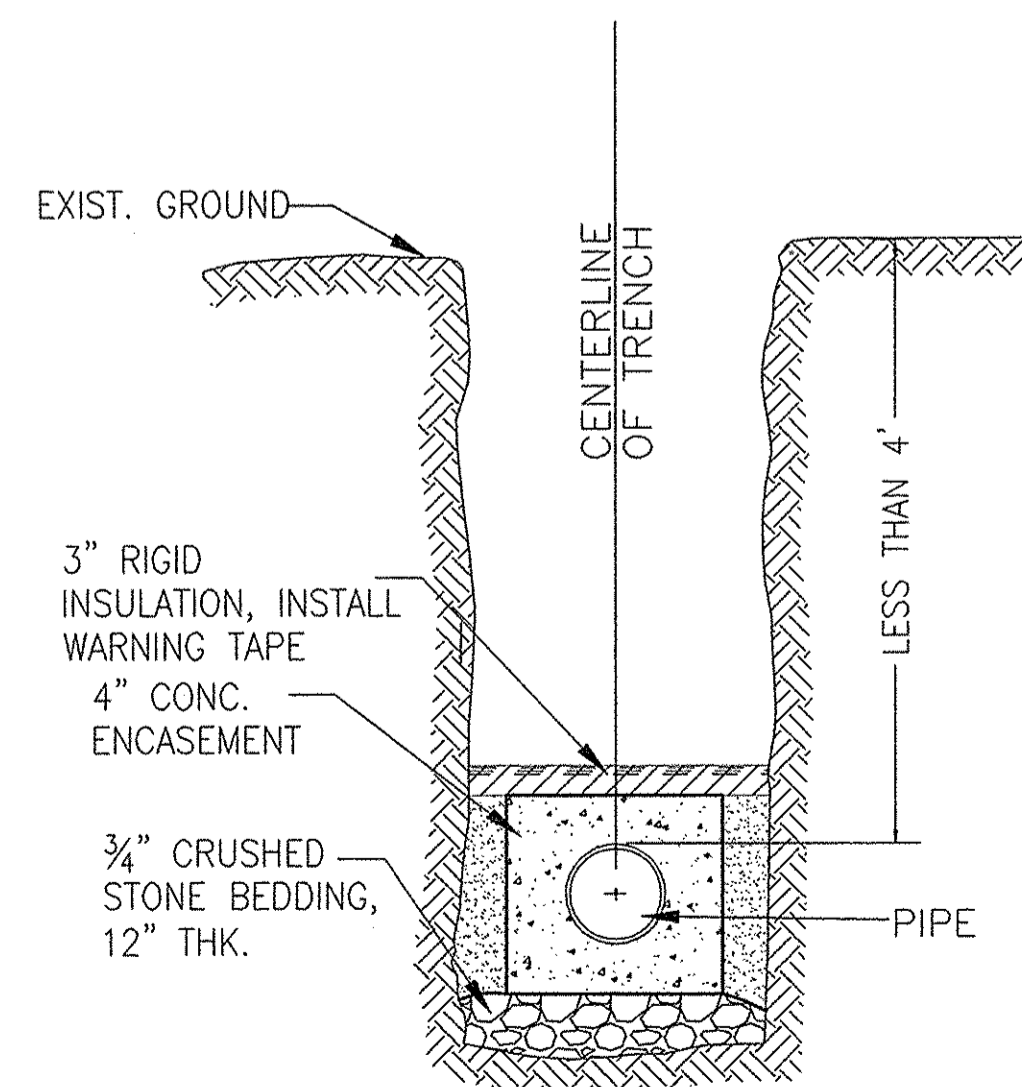
HORIZONTAL SCALE 1"=40'
VERTICAL SCALE 1"=4'



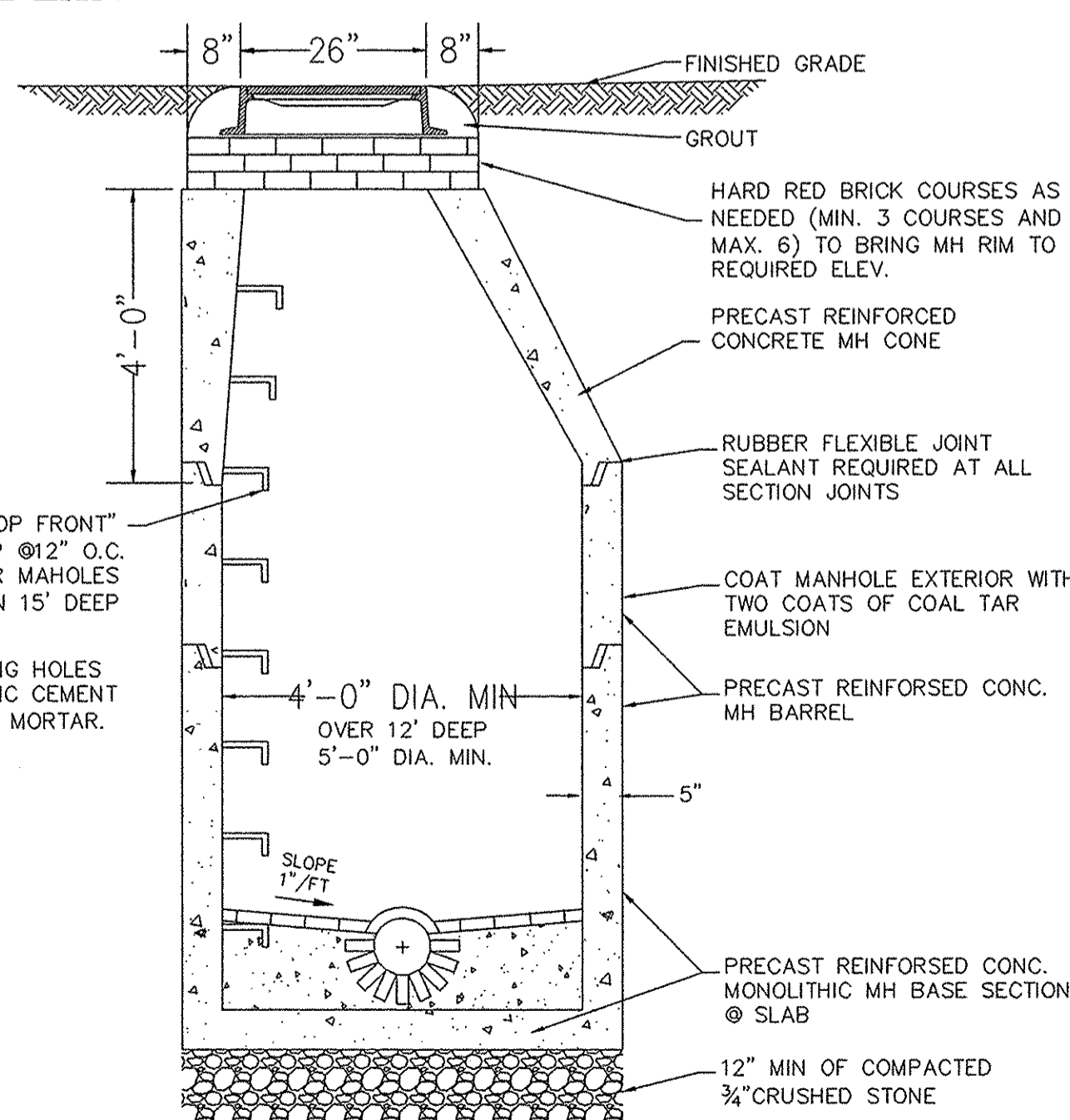
DRW: EA	CHK: DJC
DSC: DJC	DATE: 9/14
LIMITS OF WORK	DESCRIPTION
AS	REL
<p>PROPOSED SEWER PROFILE (REVISED)</p> <p>NEW ENGLAND HINDU TEMPLE, INC. PROPOSED SEWER UPGRADES ASHLAND, MASSACHUSETTS</p> <p>Prepared For NEW ENGLAND HINDU TEMPLE, INC. WAVERLY STREET, ASHLAND, MA</p>	
<p>COUGHLIN ENVIRONMENTAL SERVICES, LLC</p> <p>CONSULTING ENGINEERS AND PLANNERS</p> <p>62 Montvale Avenue Stonham, MA 02180-3637 Phone: (781) 832-1002 Fax: (781) 438-9654 Email: mail@coughlinenvironmental.com</p>	
<p>DATE: AUGUST 2014</p> <p>Q:\Projects\2690-01 Hindu Temple\CAD\PROFILE REV.dwg</p> <p>CES NO.: 2690-01 SCALE: 1"=40'</p>	
<p>SHEET 3 OF 5</p>	



FRAMINGHAM CONNECTION PLAN
SCALE 1"=20'

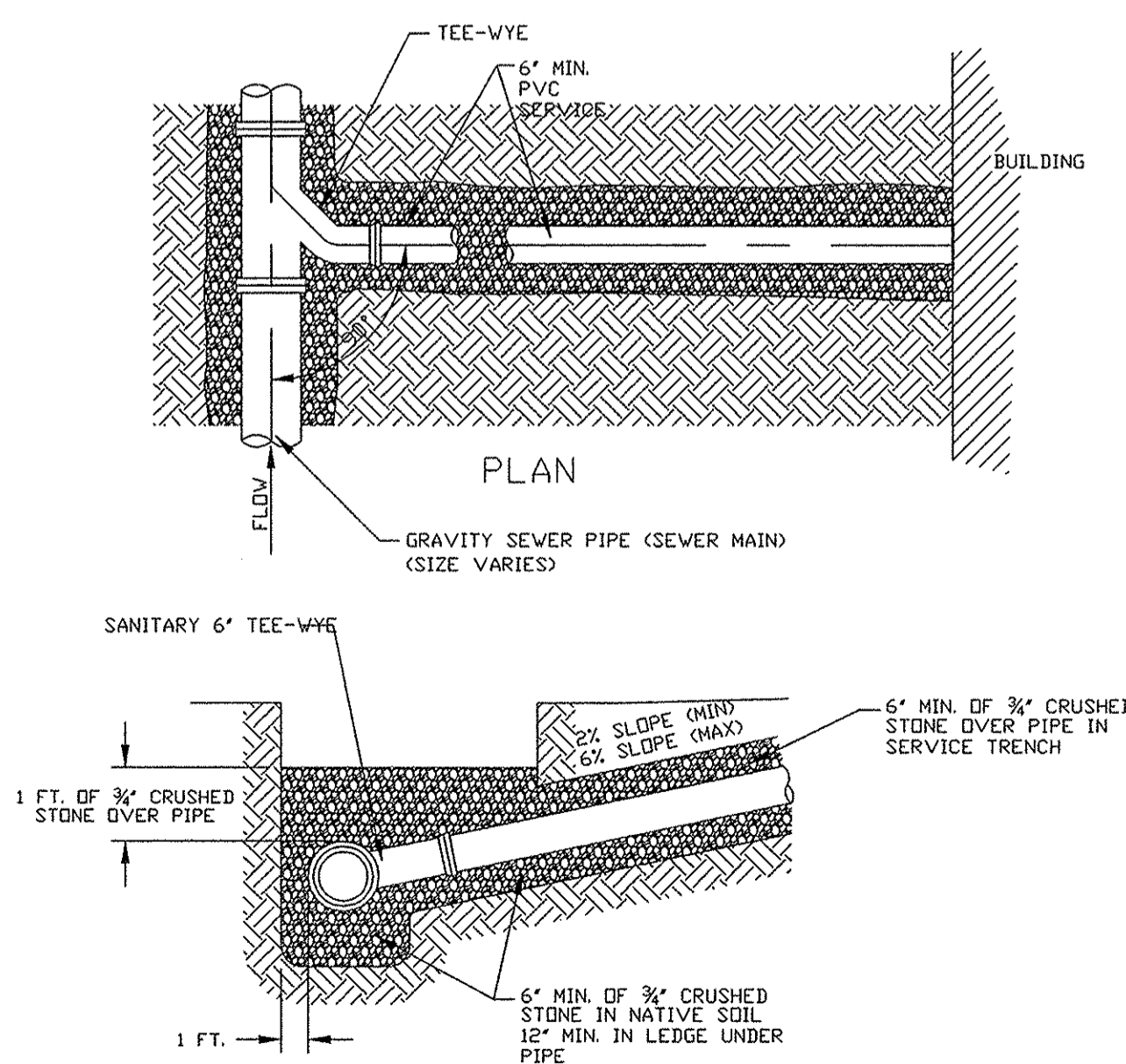


ENCASE IN CONCRETE DETAIL
NO TO SCALE



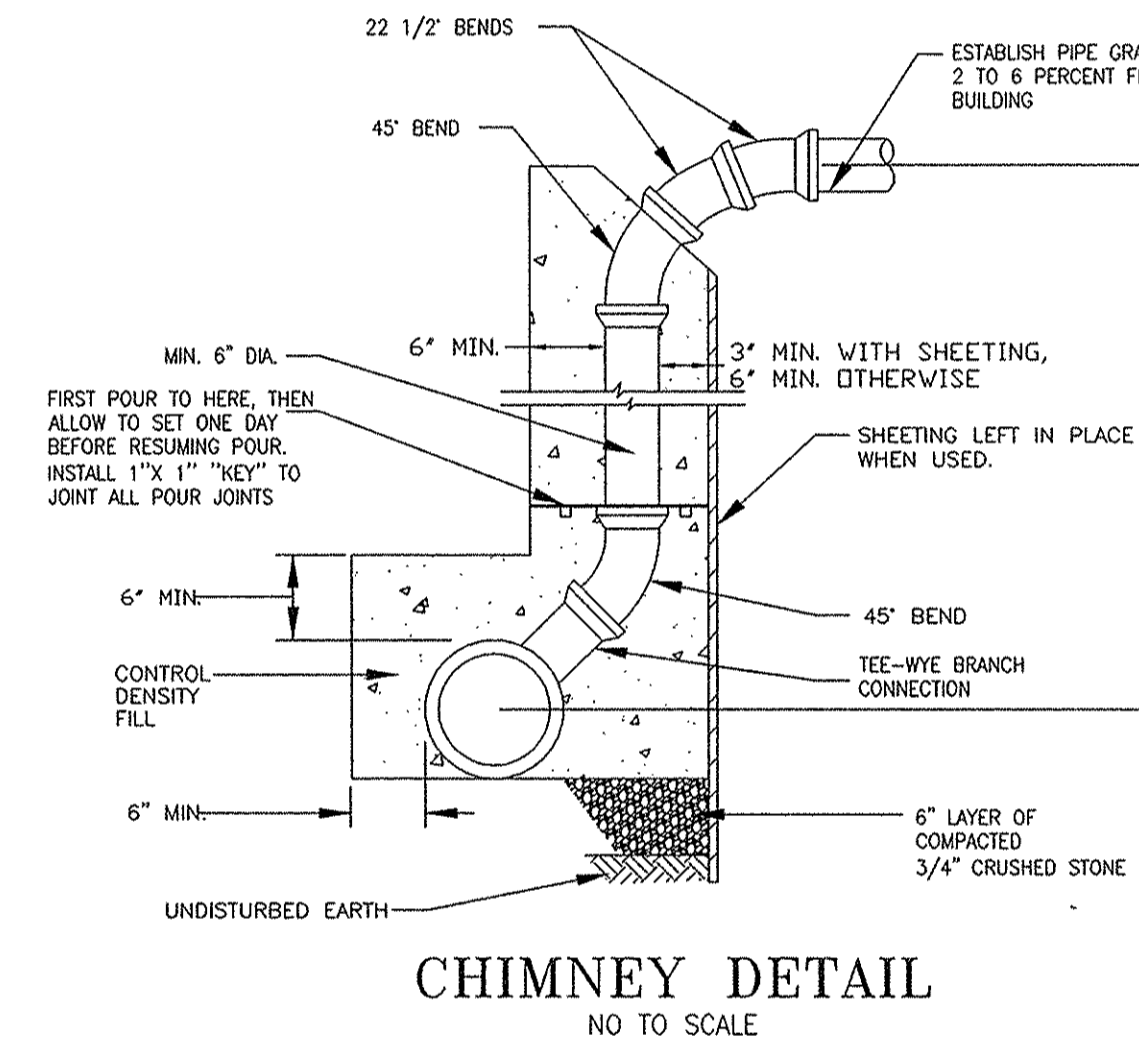
OPENINGS ARE TO BE MANUFACTURED INTO THE STRUCTURE

MANHOLE DETAIL
NO TO SCALE

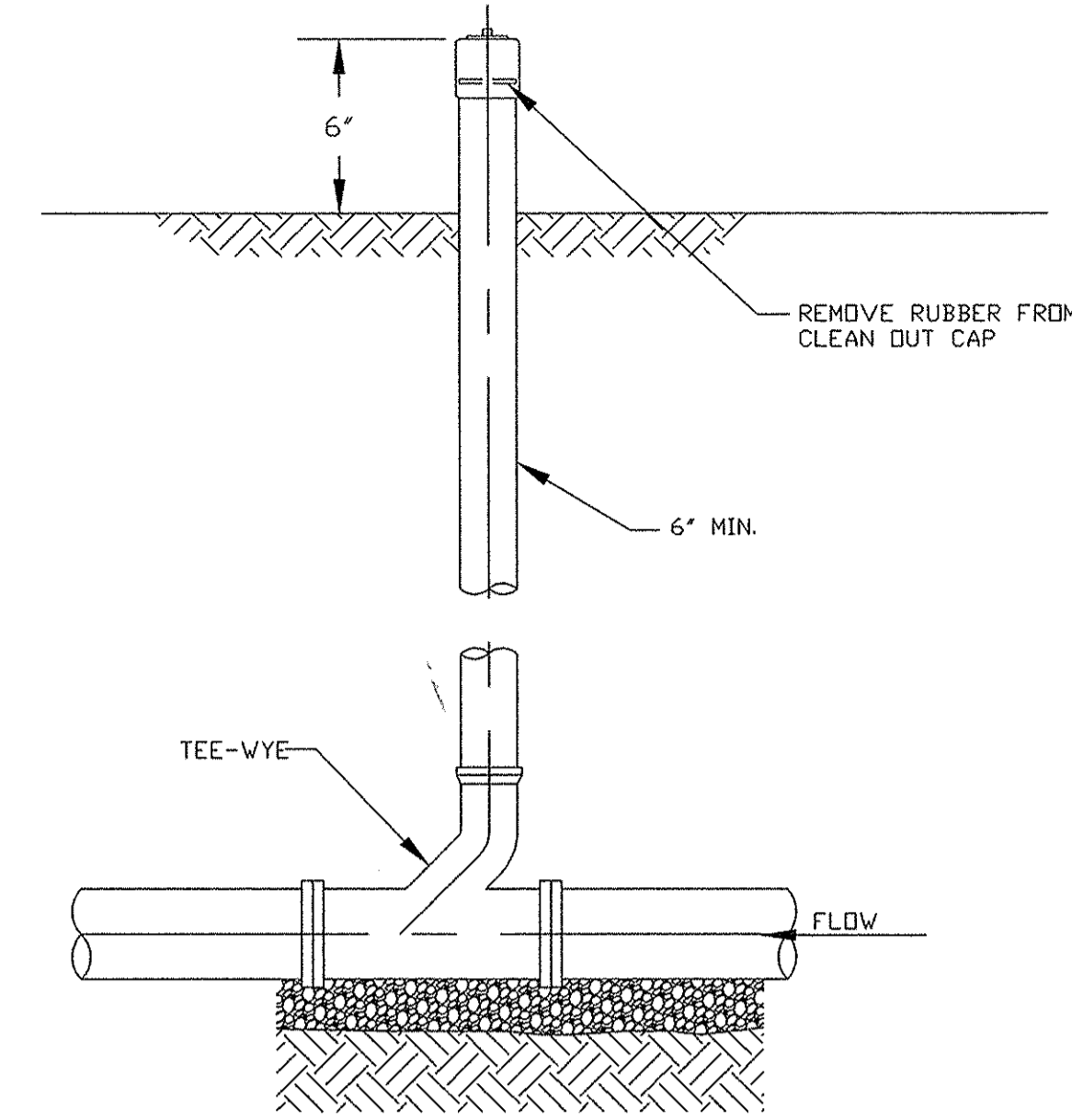


ELEVATION

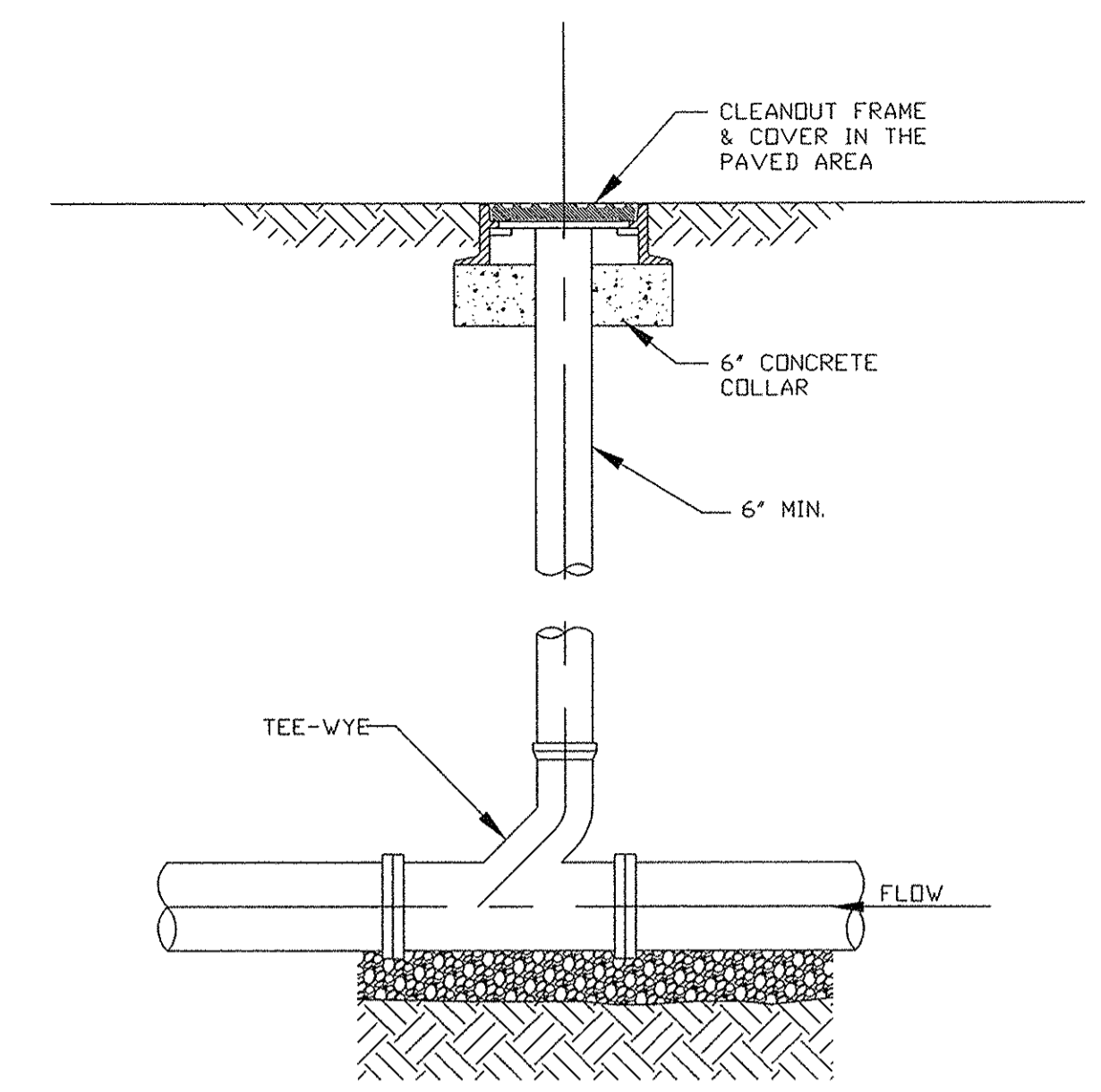
SEWER WYE CONNECTION DETAIL
NO TO SCALE



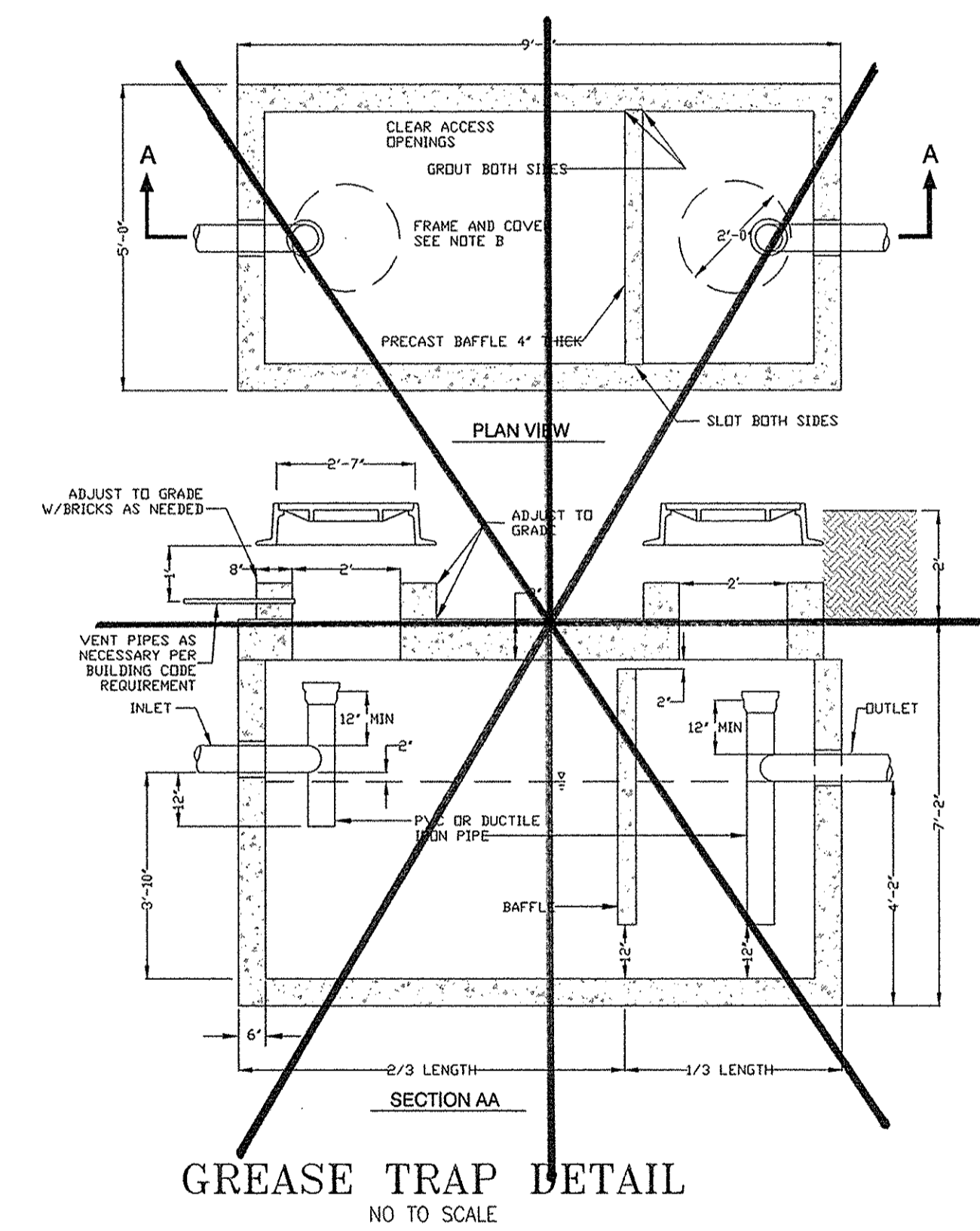
CHIMNEY DETAIL
NO TO SCALE



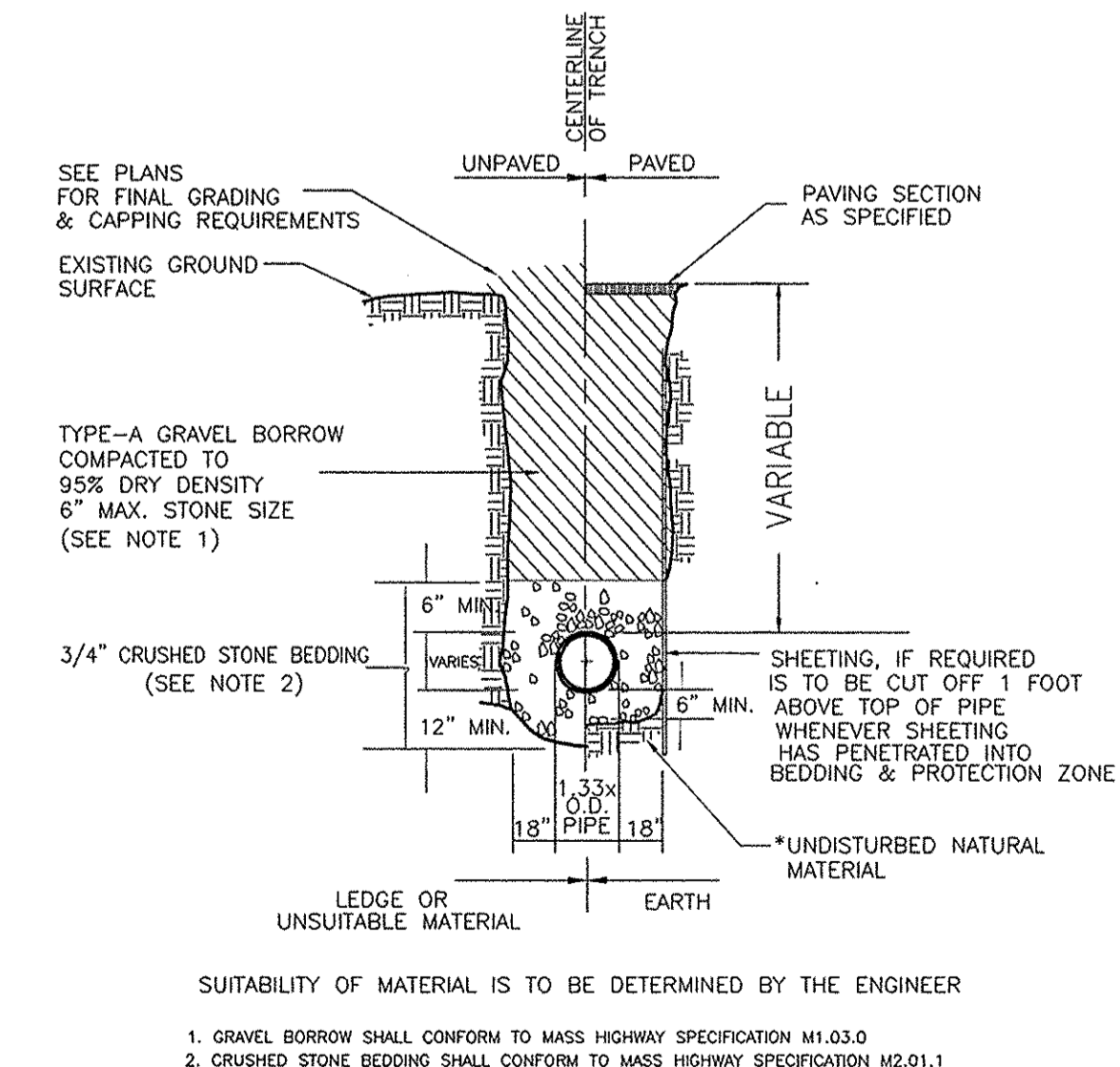
CLEANOUT DETAIL ON-LINE
NO TO SCALE



CLEANOUT DETAIL ON PAVED AREA ON-LINE
NO TO SCALE



GREASE TRAP DETAIL
NO TO SCALE



SUITABILITY OF MATERIAL IS TO BE DETERMINED BY THE ENGINEER

- 1. GRAVEL BORROW SHALL CONFORM TO MASS HIGHWAY SPECIFICATION M1.03.0
- 2. CRUSHED STONE BEDDING SHALL CONFORM TO MASS HIGHWAY SPECIFICATION M2.01.1

TRENCH DETAIL
NO TO SCALE

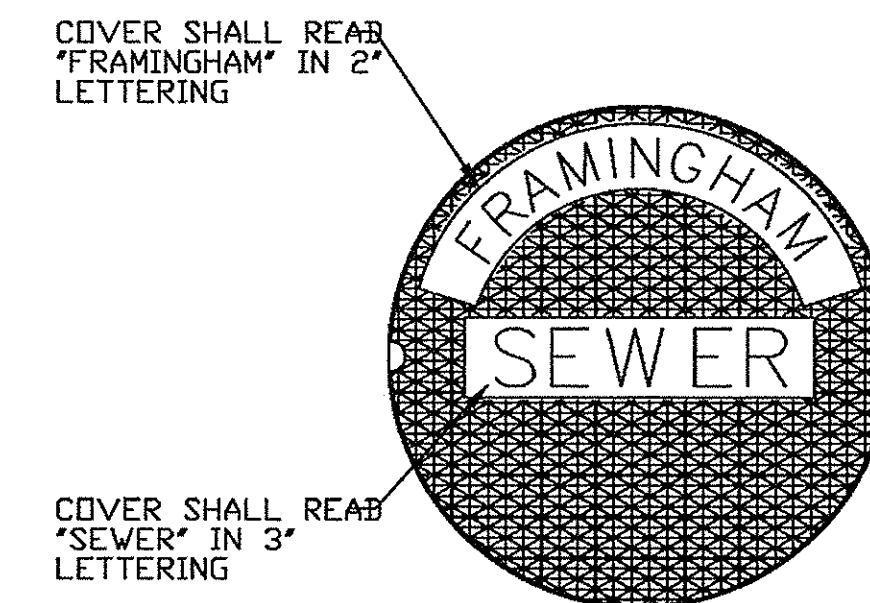
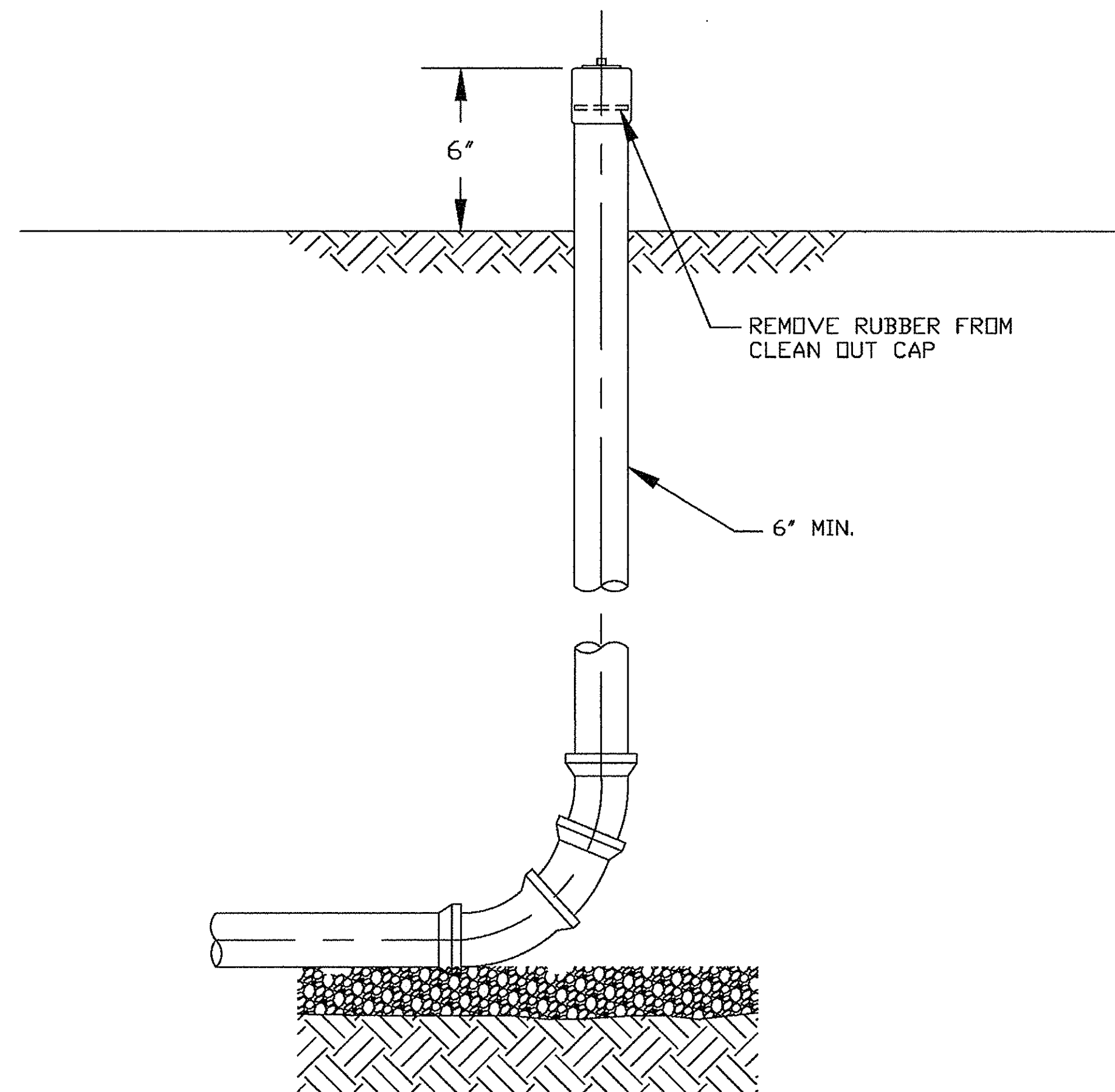
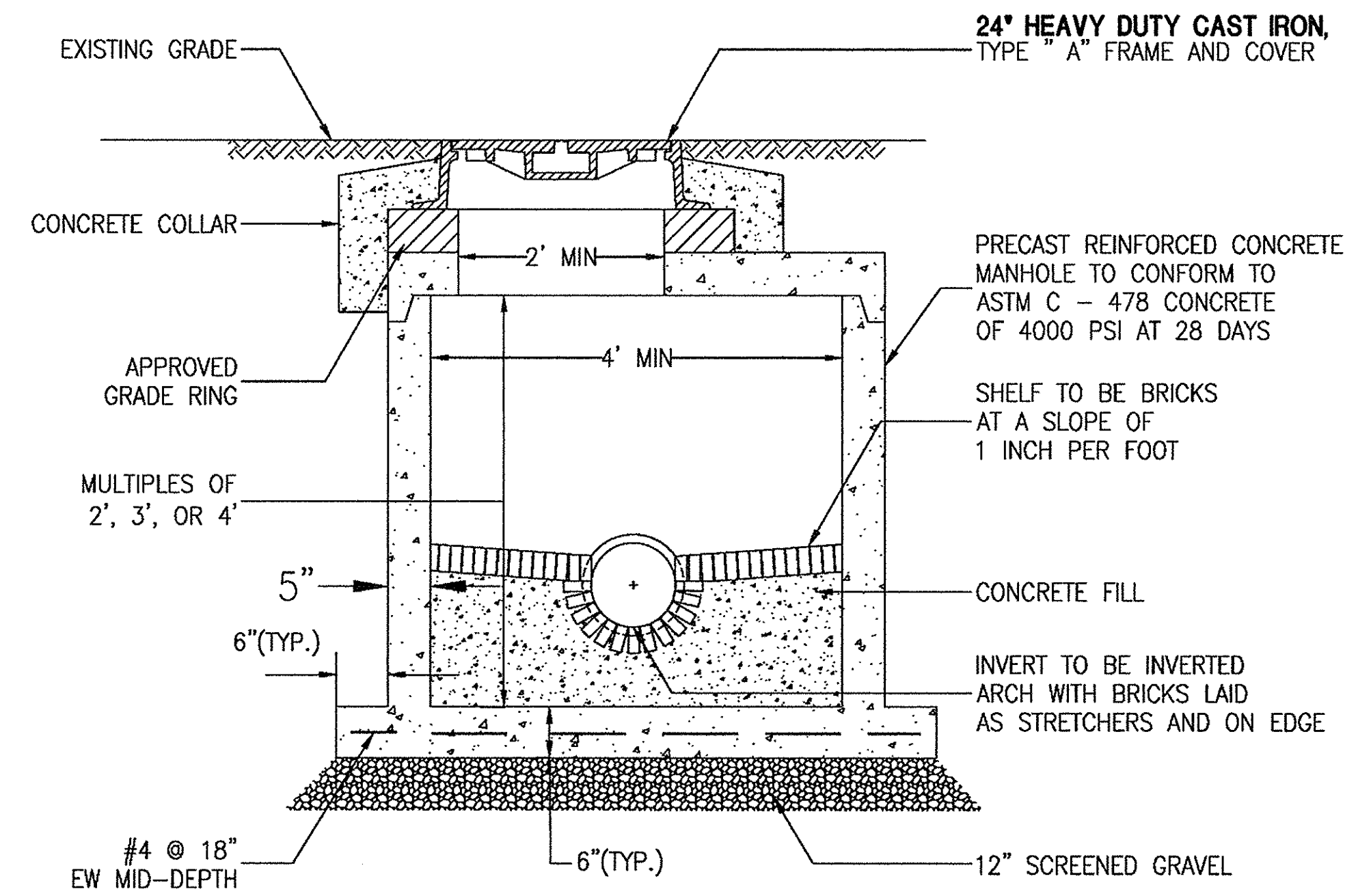
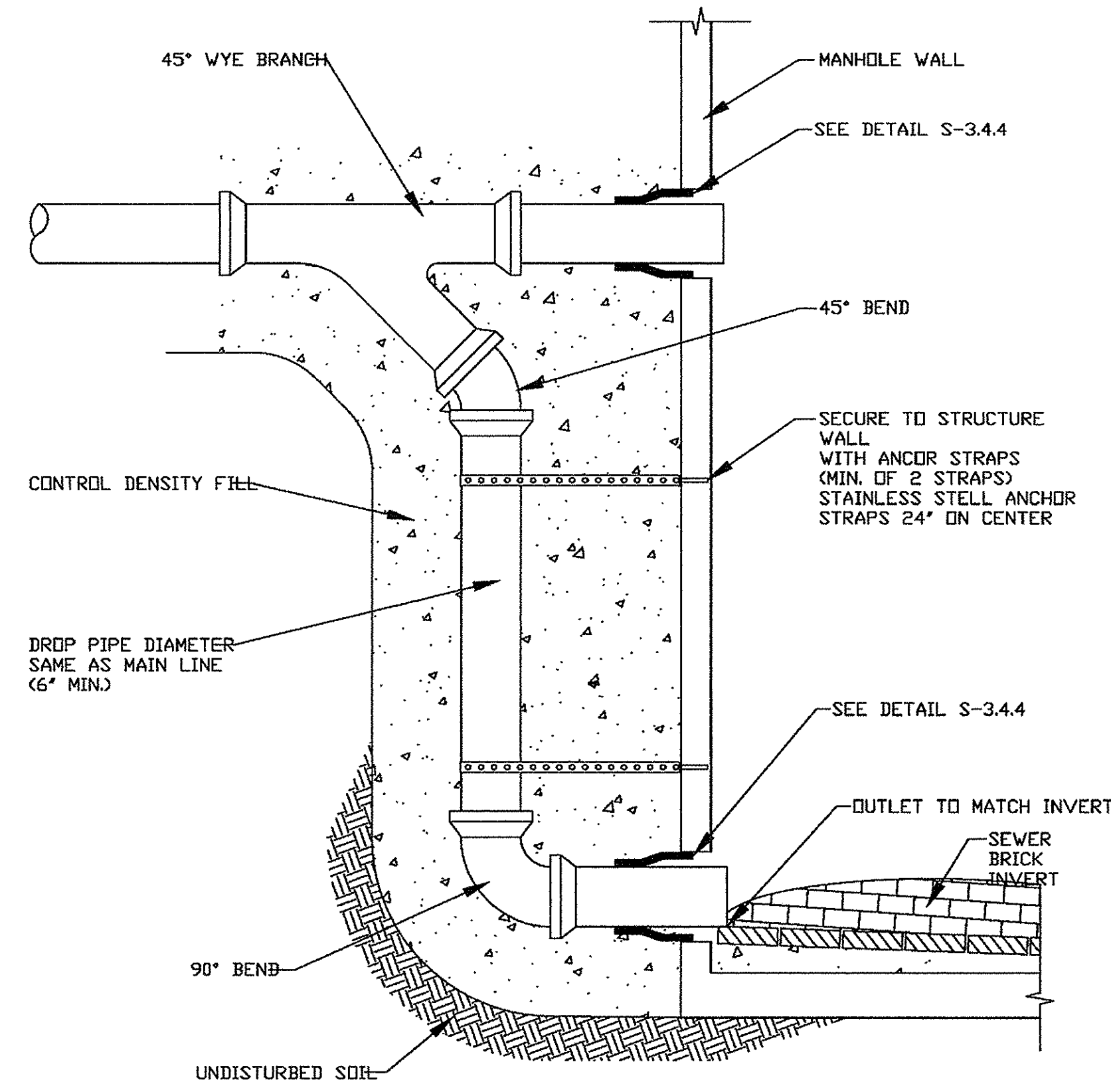
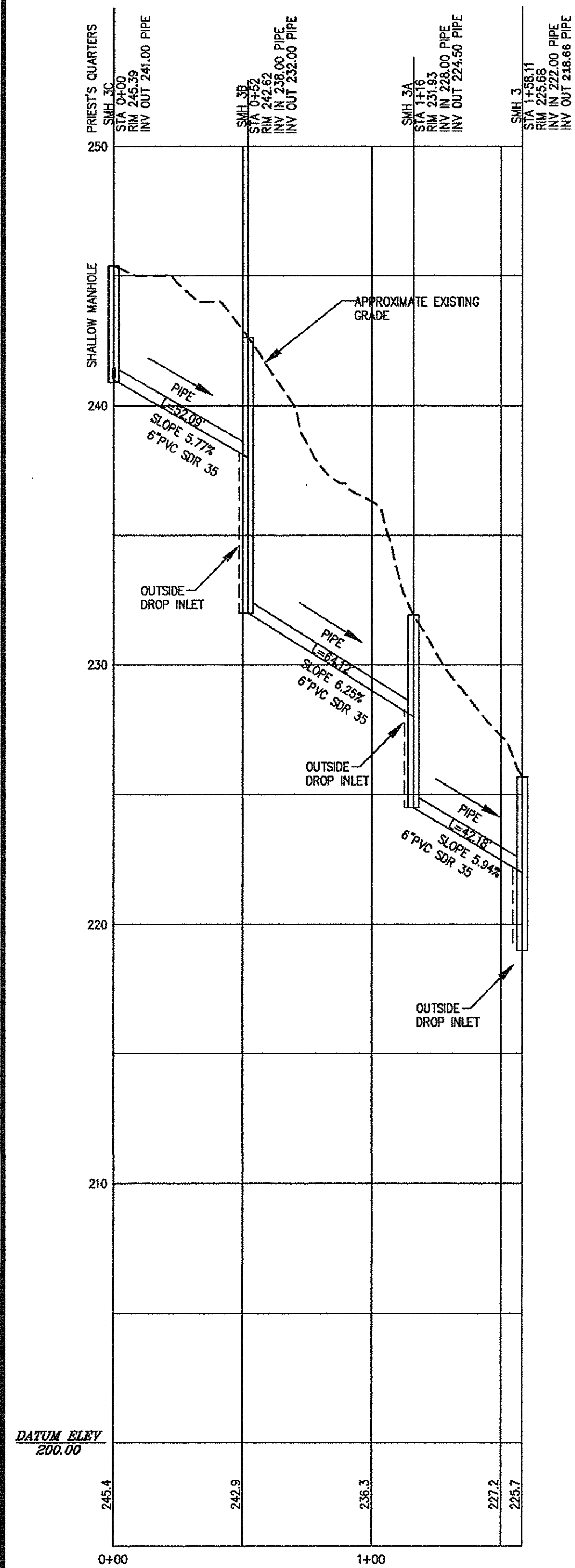
KALKUNTE ENGINEERING CORPORATION
CONSULTING ENGINEERS
1749 CENTRAL STREET
STOUGHTON, MA 02072
(731) 344-8565

Revisions	
	09/24/2012

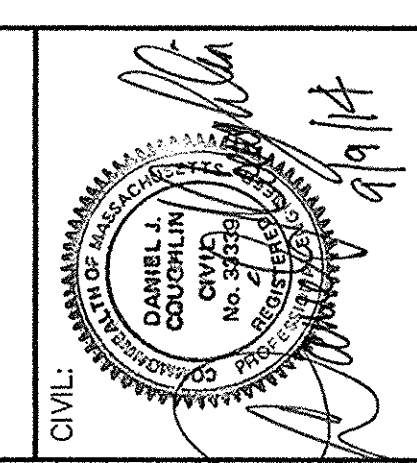
Scale as NOTED	
Date: 09/23/2011	
Job No.	
Designed by KNS	
Drawn by BZP	
Checked by KNS	
Sheet of	
Approved by	

--	--

NEW ENGLAND HINDU TEMPLE, INC.
117 WAVERLEY ST., ASHLAND, MA 01721
WAVERLEY STREET PLAN AND DETAILS



NOTES:
1. All construction details are re-produced from the Framingham construction details. For additional details contractor shall refer to the Framingham DPW details or contact the engineer.



REV	DESCRIPTION	DATE
MS	MS	9/9/14

DETAILS (REVISED SERVICE PROFILES)

NEW ENGLAND HINDU TEMPLE, INC.
PROPOSED SEWER UPGRADES
ASHLAND, MASSACHUSETTS

Prepared For
NEW ENGLAND HINDU TEMPLE, INC.
WAVERLY STREET, ASHLAND, MA

COUGHLIN ENVIRONMENTAL SERVICES, LLC
CONSULTING ENGINEERS AND PLANNERS

62 Montvale Avenue Stoneham, MA 02180-3637 Phone: (781) 832-1002 Fax: (781) 438-9654 Email: mail@coughlinenvironmental.com

DATE: AUGUST 2014
Q:\Projects\2690-01 Hindu Temple\CAD\Details.dwg
CES NO.: 2690-01 SCALE: AS NOTED